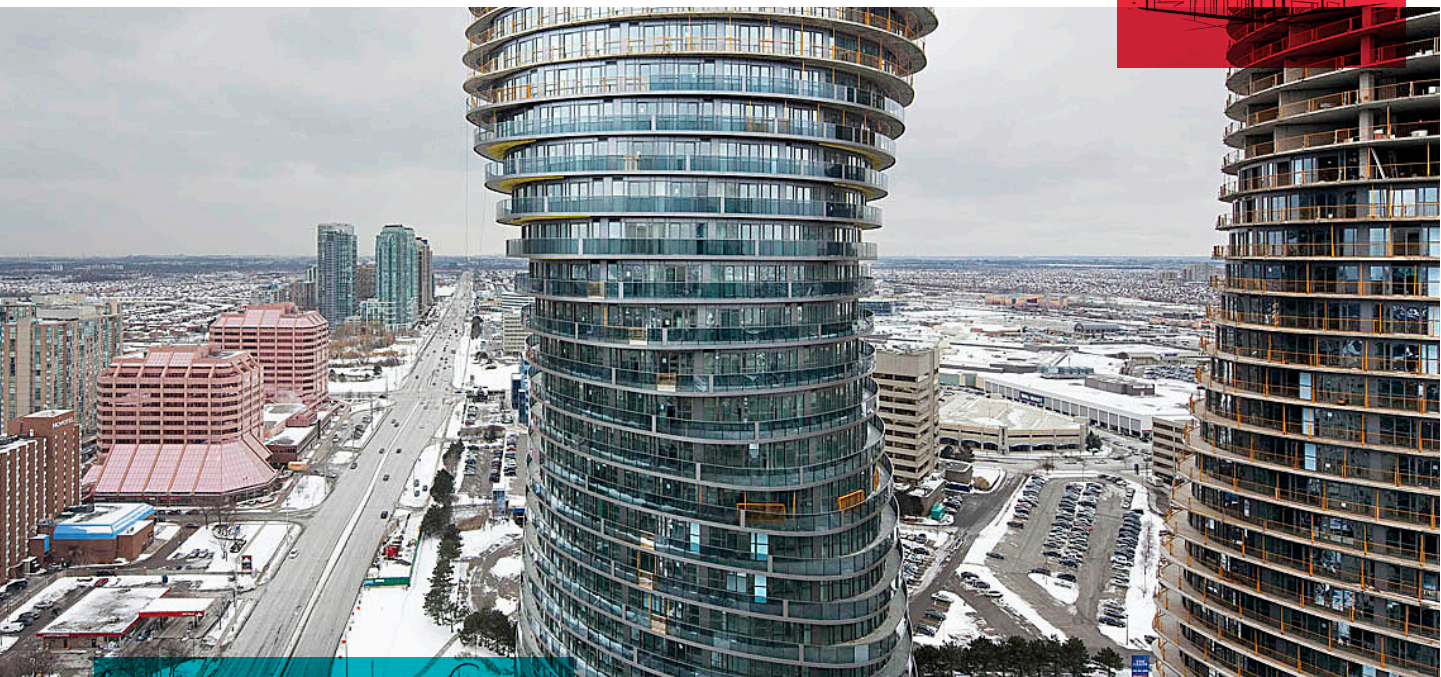


Absolute World's Winning Design uses ROCKWOOL

Case Study

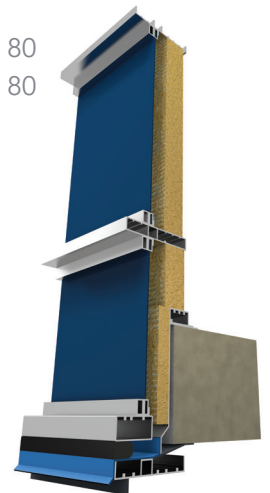


Project Overview

Absolute World is a skyscraper complex made up of five towers in the Absolute City Centre developed by Fernbrook Homes and Cityzen Development Group in Mississauga, Ontario. Standing at 50 and 56 stories, Absolute World 1&2 are two of the five residential towers known as the 'Condo Couple' and are two of the tallest skyscrapers built in a North American suburban city. Absolute World 1 was nicknamed 'Marilyn Monroe' for its curvy, hourglass figure by enamored locals and has received a lot of attention from the community and the world after its Beijing based architecture firm won an international competition for its design.

Curtain Wall Assembly

- Framing
- Spandrel Panels
- 2" ROCKWOOL CURTAINROCK® 80
- 1" ROCKWOOL CURTAINROCK® 80
- Floor (Concrete) Slab
- Flashing
- Caulking





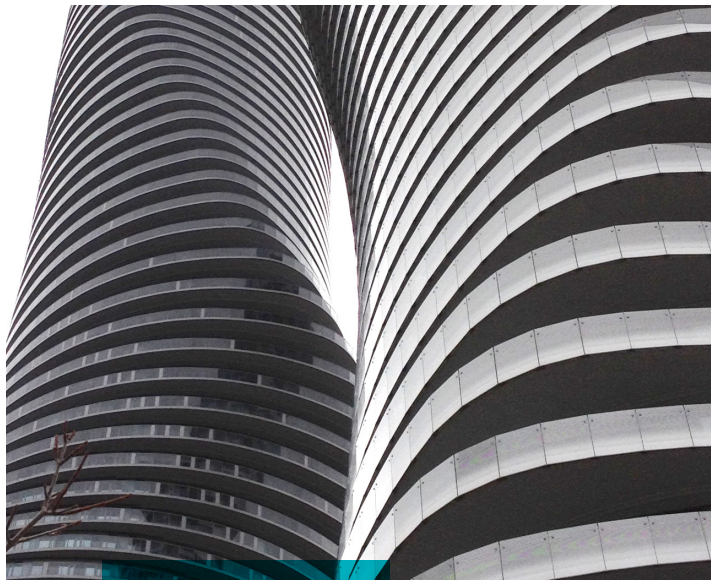
ROCKWOOL Products Used

CURTAINROCK® 80 is a rigid board insulation for curtain wall applications. The product was used in a back pan system primarily because it meets CAN4 S114 for non-combustibility (ASTM E 136), as well as CAN/ULC S102 (ASTM E84, UL 723) reporting zero flame and smoke, and because of its constant thermal resistance value.

ROXUL SAFE™ is a semi-rigid batt insulation that is UL and Intertek approved as a fire stop. This product was installed as intended between floors to help prevent fire and smoke penetration between units.

ROCKBOARD® 80 is a semi rigid board insulation designed for multipurpose use. In this project it was used on the exterior of the building to mitigate thermal bridging between balconies and the condos.

AFB® is a lightweight, semi-rigid batt insulation specifically designed for steel stud interior wall and floor applications. It was used as an interior insulation for its sound absorbing qualities to create a quiet living environment.



ROCKWOOL

8024 Esquesing Line
Milton, ON L9T 6W3
Tel: 1 800 265 6878
rockwool.com

Benefits of ROCKWOOL Insulation

Stone wool insulation has a long term stable R-value, is dimensionally stable, non-combustible, water repellent, non-corrosive, sound absorbent, will not promote fungi growth and is environmentally sustainable. ROCKWOOL has achieved ICC-ES SAVE™ third-party certification for recycled content on all products produced in the Milton facility. Containing a minimum of 75%, the facility is certified up to 93% recycled content.

Architects

MA Yansong (Beijing) - key architect
Key Architect Burka Varacalli (Toronto) - local architect
4800 Dufferin Street, Suite 201. Toronto, ON. M3H 5S9
416-665-0722

Developers

FernBrook Homes
Cityzen Development Group
56 The Esplanade, Suite 308, Toronto ON, M5E 1A7
416-777-2489

Contractors

Sigmund Soudack & Associates
ECE Group
NAK Design Group is the landscape architect
Toro Aluminum - high-rise glazing systems manufacturer

Location: Mississauga, Ontario, Canada

Project Timeline: 2008-2012

Absolute Towers 1&2 used ROCKWOOL™ products for passive fire protection and as the primary thermal insulation materials thermal value.